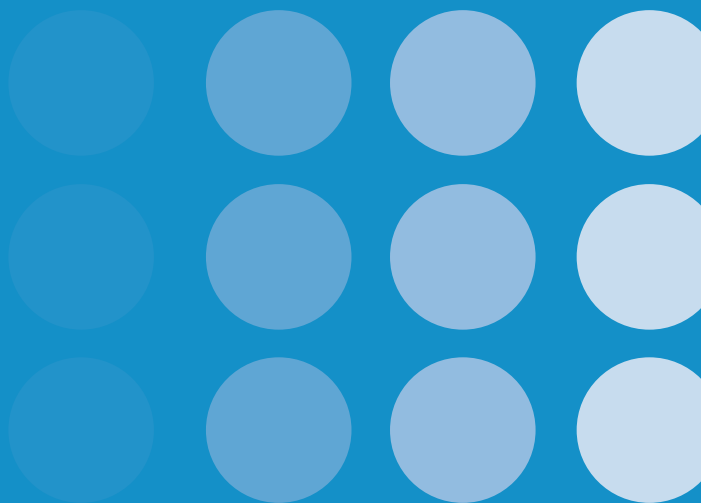




inside i-Guide™

Quick Reference Guide



Buckeye CableSystem



Quick Menu: Quick And Easy. ...

The **Quick Menu** offers shortcuts to key **i-Guide** features. Just press the **MENU** from anywhere in the guide — or even while you're watching a program — and you'll have access to features like the **Search, Favorites, Parental Controls** and more.



Press the on your remote to highlight an option, press **OK** and you're on your way.



Press **MENU** button twice for the **Main Menu**.

All Access With Main Menu.

Main Menu* gives you easy access to all features. Simply press **MENU** twice, then select from the options available, including **TV Listings By Time**, viewing options by category, **Parental Controls, Favorites, Local Weather** and more.



Enhanced Searching.

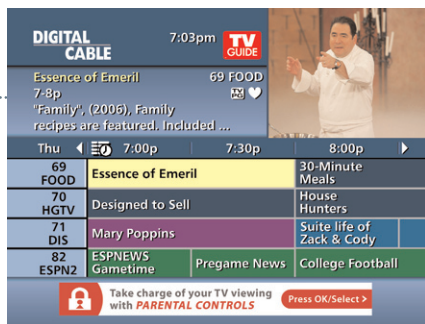
With **i-Guide**, you can sort and view program **Listings By Time, Listings By Channel**, or by categories such as **Movies, Sports, Kids** and more. Select a category from the **Main Menu** or **Quick Menu** to display listings.



...Subcategories let you focus your search even further. For example, you can search for movies that fit your mood: comedies, dramas, adventure and more.

Program Information At Your Fingertips.....

i-Guide provides **Instant Information** while you view program listings, including program title, start/end time, program rating, a brief program description and helpful indicators that identify your settings, such as **Reminders, Recordings** and **Favorites**.



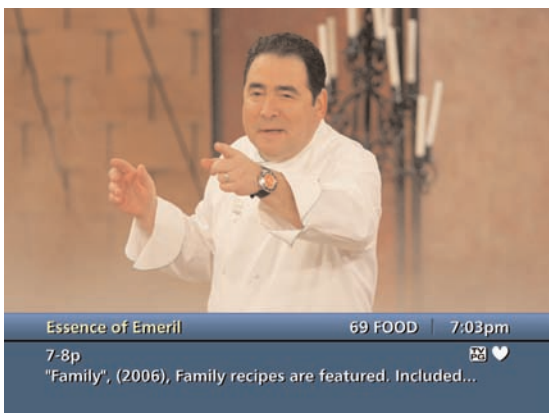
For more detailed information, press the **INFO** button on your remote.



Easy-To-Understand Listings.

TV Listings appear in a grid format with channel numbers and network call letters down the left side and times along the top. Listings are color coded to help you identify different types of programs.

- Blue** – Regular programs
- Purple** – Movies
- Green** – Sports
- Light Blue** – Children's programs



When you find a program you like, press **OK** to make the **Flip Bar** disappear or press **INFO** for more program details.

Smart Channel Surfing.

The **Flip Bar** lets you see program information as you change channels.

The **Mini Guide** lets you watch television and view listings without having to leave your program. To access, press **OK** or **INFO** then use the **◀▶** buttons to browse time and use the **▲▼** buttons to browse channels.



Action Icon Shortcuts.

From the Program Information screen, you can use the **Action Icons** at the bottom of the screen to set a **Reminder**, see other air times and more.



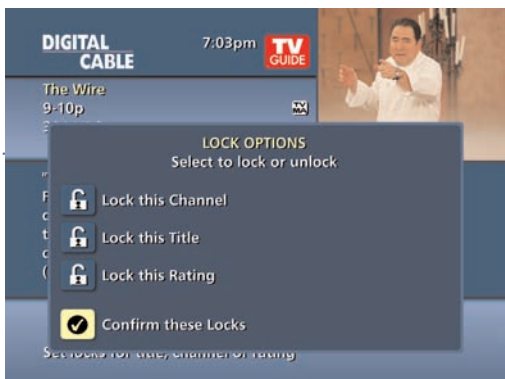
Use the arrow **◀▶** buttons to highlight an icon, a description will appear just below the icons.



Parental Controls To Protect Your Family.

Parental Controls let you restrict viewing and purchases of TV programming based on your preferences. Set a personalized 4-digit **PIN** and you can place locks on selected ratings, channels and titles. You can also hide adult titles from being displayed on screen.

Select **Parental Controls** from the **Quick Menu** to set up **Parental Controls and PINs**.




Go Ahead, Play Favorites.

i-Guide's Favorites feature lets you quickly access the channels you've designated as your **Favorites**. Just select **Favorites** from the **Main Menu** or **Favorites** from the **Quick Menu**.

Pay-Per-View**, Made Easy.

Ordering **PPV** movies and events is easy with **i-Guide**. From the **Main Menu** or **Quick Menu**, select any of the PPV options to see a list of available programs. Use your remote to get detailed information and order. You can even cancel through **i-Guide**. And if you do not tune in to the program, you won't be charged for it.†

If your PPV program is scheduled to air at a future time, a Reminder is automatically set to appear before your program begins.

DIGITAL CABLE	7:03pm	TV GUIDE	
The Break-Up	7-9p	503 iNPPV	PG-13
Vince Vaughn, Jennifer Aniston, (2006), ★★, Breaking up is hard ...			
TV Pay-Per-View By Title			
The Break-Up			
Failure to Launch			
Lucky Number Slevin			
V for Vendetta			
Wrestling: Half Pint Brawlers			
X-Men: The Last Stand			

On Demand** Brings The Video Store To You.

Rent an **On Demand** program or package and you can watch it at your convenience, as many times as you want within the rental period. You can even pause, fast-forward and rewind.

YOUR VOD BRAND	7:03pm	On Demand
The Departed	119min	R
Leonardo DiCaprio, Matt Damon...		
ON On Demand New Releases		
Blood Diamond		NEW
Casino Royale		NEW
The Departed		NEW
Running With Scissors	Ends 01/12	
Superman Returns		NEW
X-Men: The Last Stand	Ends 12/28	

Access On Demand programming from Main Menu, Quick Menu or a channel in the TV Listings.

introducing i-Guide.™

The all new interactive programming guide from TV Guide. It's intuitive, intelligent and inspiring. It unlocks a world of greater choice, convenience and control as you watch television.

With i-Guide you'll enjoy:

- A sleek, new design
- A convenient, time-saving **Quick Menu**
- A friendlier display with a full 90 minutes of programming listings
- Enhanced searching
- Increased speed
- And **Mini Guide**, a whole new way to watch TV and surf at the same time


Try i-Guide. In no time, you'll be able to **Set Reminders, Favorites, Parental Controls**, and use our **Mini-Guide** to find out what's next, while you continue to watch your favorite shows. Plus, you'll have access to great features like **On Demand** and **Digital Video Recording***.

With **i-Guide**, the world is at your fingertips.

*Not available on all systems.

Remote Control Features

Basic Navigation

- **Yellow** is always the highlight color. As you navigate listings using the remote, the highlight appears on screen to indicate the current selection.
- Press the  buttons to move the highlight.
- Press **OK** to make a selection.
- Press the **EXIT** button to return to watching TV.



Digital Video Recording (DVR)** Puts You In Control.



Pause live television. Rewind and replay programs. Record your favorites all season long. With **Buckeye DVR**, you're in control. Now you can record up to 60 hours of programming, or up to 10 hours of High Definition programming** — all without rentals, tapes or returns.

Control Live TV.



Any time you tune to a channel, the **DVR** starts a temporary recording. So you can **PAUSE** if the phone rings, **REWIND** the scene you missed and **FAST-FORWARD** to skip what you don't want to watch.

Three Ways To Record.

Press **RECORD** on your remote any time while watching TV or navigating through the guide for easy, one-touch recording. Or, you can record interactively by program or manually schedule your recording.

Many Ways To Play.

Your **DVR** offers many playback controls.

- < **Pause** > Press **PAUSE** to freeze, press **PLAY** to resume.
- < **Rewind** > Press **REWIND**. Press it again up to 4 times to increase the rewind speed.
- < **Fast Forward** > Press **FAST FORWARD**. Press it again up to 4 times to increase the speed.
- < **Slow Motion** > Press **PAUSE** and then **FAST FORWARD** or **PAUSE** and then **REWIND**. To return to regular speed, press **PLAY**.
- < **Instant Replay** > Press **PAGE**  to replay the last 15 seconds. Press repeatedly to continue skipping back in 15-second intervals.
- < **Return to Live TV** > To return to the live TV you have paused or rewind, press the  button.

Some remotes have **Instant Replay** and **Live** buttons.

*Menu selections vary depending on the services your cable provider offers.

**PPV, On Demand and DVR not available in all areas. On Demand programs may not be recorded with DVR. DVR recording capacities vary.

*In systems that offer phone ordering, call your cable company to cancel your PPV order.