



Trivia~Trivia~Trivia

What is "Scareware"?

(Hint: the answer can be found in last months issue of the Midstate Messenger)

****Deadline to enter is the 15th of the Month.** All correct entries will be entered into a drawing for \$10.00. Submit your answers by: 1) Writing your answer on a piece of paper with your name, address and telephone number and mailing to our Midstate office at PO Box 48, Kimball SD 57355 or 2) Go online to our website at www.midstatesd.net and click on the Trivia link in the bottom left corner and submit your answer online following the online instructions. *Trivia submissions will not be taken by telephone.*

And the Winner is...

Congratulations to Sue Bickner! She knew that Rural Kimball is the location of the first Fiber-to-the-Home construction project.

Summer is Here...it's Time to Fire Up the Grill!

Join us for a Free Customer Appreciation Lunch as we thank you for your support with a backyard style cook-out. Bring your family and friends and enjoy the fun as Midstate will provide the food and beverages along with door-prizes and free giveaways.



June 8 – Gann Valley, Gann Valley Fire Hall
June 21 – Delmont, Delmont City Park

"LIKE" US!

Midstate Communications has joined the world of Facebook. Keep up with all of the Midstate happenings, contests, customer appreciation events and important news all from one place. Search Midstate Communications from your Facebook homepage and click on the "Like" button on the top of the Midstate Communications Facebook page.



Important Dates to Remember...

Please mark the following dates, regarding our billing schedule, on your calendar. Bills are mailed the last business day of each month, and payment is due on the 20th of the month. Paying on time saves frustrating calls and unwanted late fees.

- **Last Business Day of Each Month**
Bills mailed out from Midstate's office
- **5th of Each Month**
Disconnect of all accounts with a 30 day balance.
- **20th of Each Month**
Bills are due in either Midstate office by 12:00 p.m.
- **20th of Each Month**
Overdue notices mailed out and late fees will be applied to all delinquent accounts.

**All Midstate bills are due upon receipt. Any bills that have not been received by the 5th of the following month will be disconnected. To be reconnected the bill must be paid in full and will be subject to a down payment and appropriate reconnect fees.*

District Board Elections...

Three district board positions are up for election this July. Individuals who are interested in running for a position on the Midstate Communications Board of Directors have until June 12, 2011 to properly fill out and return a nomination petition to have their name added to the election list. Nomination petitions may be picked up at the Midstate Communications office.

Director elections will be held during the month of July at voting places located in each district. Each member of that voting district will also be mailed a voting ballot that can be returned to the Midstate office no later than the posted date of election for that exchange to be counted towards the election.

This year's district elections will be held at:

- July 12 – New Holland District.** Overweg Feed and Seed
- July 14 – Stickney District** Stumble Inn
- July 18 – Kimball District.** Club Vega

Are You Being Sidejacked?

The scene: You're at a hotel or fast food location, logging into Facebook, your email, or shopping on your laptop. Across the room, someone else is typing away on their computer. The innocent looking cybersurfer could be logging into your Facebook account or hacking into your email session. How? It's called sidejacking. It is a big problem. Are you allowing others to see your private information?

Sidejacking refers to the ability to hijack a web session on another computer that is connected to the same open Wi-Fi network. (Someone sitting by your side or outside your home, hijacking your web surfing session).

How do they do this? There are free downloads on the internet that can monitor what you do on the internet. For instance, when you sign into your Facebook account, a session cookie is sent back to your machine for any other requests you make during that session (so you don't have to constantly input your username and password). Once you log off, the session cookie is terminated and is no longer in use.

If someone is on a computer near you and on the same unsecured network, they can literally snatch a copy of the session cookie out of the air and start using your account as if you had just logged into their computer. Sound scary? It is!

How do you prevent this from happening to you? It starts at home. Is your wireless router at home password protected? If you aren't sure it is time to find out. If you happen to have a Level One wireless router, look at see if the "padlock" light is on. If it is, you are secured. If you have a different brand of router, you will need to go into your wireless connections and it will tell you if it is secured and the type of security (WEP, WPA, or WPA-2). Having a secured connection at home will ensure that no one else is using your wireless connection unless they have your wireless password.

What happens when you aren't at home? First and foremost, don't ever login to any of your e-mail, shopping or social networking accounts through a web browser on a public network unless the site is HTTPS. To be clear, banking sites or other secure websites that use the "HTTPS" protocol on all pages cannot be exploited by this tool, only exchanges that are unsecured (HTTP), which is how many sites operate once you log in.

If you have any questions on Sidejacking, give us a call at Midstate, 605-778-8028.

Channel of the Month...

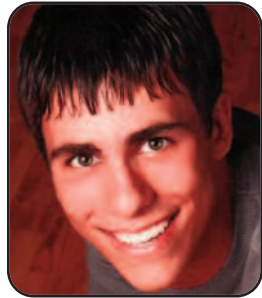
Turner Classic Movies presents the greatest motion pictures of all time from documentaries, to comedies, dramas and much more. Turner Classic Movies features commercial-free classic movies, mostly from the Turner Entertainment and MGM, United Artists, RKO and Warner Bros. film libraries.

TCM's vast library of films spans several decades of cinema and includes thousands of film titles. TCM's programming season runs from February until the following March of each year when a retrospective of Oscar-winning and Oscar-nominated movies is shown, called 31 Days of Oscar. The network also airs original content, mostly documentaries about classic movie personalities and particularly notable films.

If you love "old" Hollywood, you will love Turner Classic Movies. Turner Classic Movies can be found on Midstate Digital Channel 180.



2011 Midstate Communications Scholarship Recipients



BRANDON HANTEN

Parents: Joe & Paulena Hanten
High School:
White Lake High School
Post Graduate:
University of South Dakota



NATASHA HAUGE

Parents: Martin & Jody Hauge
High School:
White Lake High School
Post Graduate:
University of South Dakota



SAMANTHA TONAK

Parents: Lori Tonak
High School:
Kimball High School
Post Graduate:
Ridgewater College



WHITLEY FALOR

Parents: Bill & Kathy Falor
High School:
Kimball High School
Post Graduate:
University of South Dakota



SAMMI NACHTIGAL

Parents: Sam & Patti Nachtigal
High School:
Platte-Geddes High School
Post Graduate:
University of Minnesota



JENETTA PORTER

Parents: Lee & Resa Porter
High School:
Platte-Geddes High School
Post Graduate:
South Dakota State University



CODY DOZARK

Parents: Russell & Barbara Dozark
High School:
Tripp-Delmont High School
Post Graduate:
Dakota Wesleyan University



LEANNA BENTZ

Parents: Jerome & Yvonne Bentz
High School:
Dakota Christian High School
Post Graduate:
Dordt College



TESS WENTWORTH

Parents: Jim & Jackie Wentworth
High School:
Stickney High School
Post Graduate:
Augustana College



GINA DETHLEFSEN

Parents: Clyde & Cheryl Dethlefsen
High School:
Stickney High School
Post Graduate:
Mount Marty College

*Midstate
Telecom
Recipient...*



COURTNEY MUELLER

Parents: Jill Mitchell & Mark Mueller
High School:
Chamberlain High School
Post Graduate:
University of Minnesota

Midstate Cable TV... Your Most Affordable Option!

Midstate Cable TV rates continue to be some of the lowest rates available for the amount of channels and content you receive. Unfortunately, we are forced to raise our rates by \$1.00 per month per subscriber to help meet the sky-rocketing rate increases we are forced to absorb. A big reason for this rate increase is the fees that television programmers charge cable TV providers such as Midstate. Not only do they charge very high fees to include their programming in a cable provider's line-up, they also dictate channel and tier placement. Some providers also require the purchase of more than one channel, adding unwanted costs and a line-up of filler programming that customers do not necessarily want.

TV-network owners say they want to be fairly compensated for their programming, for which costs are rising. Some of these costs are coming from star-power, like sports figures. Carrying ESPN alone is a huge cost to Midstate. Although the network is very popular, the cost alone is pushing many large providers to look at alternatives.

With each network contract renewal, we face big increases, which at times unfortunately we must pass those increases onto our customers. Large providers like Comcast and Time Warner have some leverage, providing service to millions of customers. It is the small cable TV providers, such as Midstate Communications, that have no say in what the programmers are charging. It is, and will continue to be Midstate's goal to provide quality programming, local content, and the best service at the lowest possible cost for our customers.

Lifeline & Link Up Programs

Lifeline and Link Up telephone assistance programs are available to qualifying customers of Midstate Communications and Midstate Telecom. Lifeline & Link Up support provides discounts to eligible low-income consumers to help them establish and maintain telephone service.

Lifeline assistance lowers the cost of basic monthly local telephone service. Eligible consumers can receive up to \$8.25 per month in discounts. Link Up reduces the cost of initiating new telephone service. Eligible customers can receive a 50% discount off of the one-time costs associated with initiating phone service, up to a maximum of \$30.00.

Who is eligible? Customers who qualify under one of these major economic assistance programs: Temporary Assistance for Needy Families (TANF), Food Stamps, Energy Assistance, Medicaid, Supplemental Security Income (SSI), Federal Public Housing Assistance, National School Lunch (NSL) or income guidelines at or below 135% of the Federal Poverty Guidelines. The named subscriber to the local telephone service must participate in one of these assistance programs in order for that household to receive Lifeline support. When you qualify for any of the above programs, you must self-certify in our office by completing a Lifeline-Link Up Assistance Application.

If you no longer qualify for any of the economic programs, then you no longer qualify for Lifeline or Link Up and must contact our office to discontinue this discount. For more information on Lifeline or Link Up, call our office at 778-6221 or 234-8000. For questions on eligibility, call your county social services office.